

UNPRECEDENTED ADVANTAGES

Tata Steelium Continuous Annealed grades offer unprecedented quality advantages with a wide range of processing and end-product benefits. These include:

Superior Surface

Ensures superior surface cleanliness. This minimises pre-treatment time significantly. It also reduces the chemical consumption in pre-treatment process resulting in cost savings at the customer's end. It ensures excellent surface texture for paint adhesion.

Uniform Mechanical Properties

Uniform mechanical properties are assured throughout the length of coil. Hence, customers get consistent quality with higher yields during stamping.

Enhanced Flatness

Improved flatness reduces adjustment time in the customer's process and increases productivity.

Tighter Tolerances

This reduces wastage and helps to maximize yield.

Better Weldability

Optimum chemistry of the steel keeps electrode consumption to a minimum.

100% inspected coils

Ensures guaranteed quality.

BENEFITS THAT TRANSLATE INTO GREATER VALUE FOR CUSTOMERS

- 1** **Cost savings**
through optimum chemistry & clean surface.
- 2** **Yield maximization and reduction in waste generation**
through tighter tolerances and uniform mechanical properties.
- 3** **Consistent end-product quality**
through consistent steel quality and uniform mechanical properties.
- 4** **Higher productivity**
through better flatness and clean surface.
- 5** **Higher life after powder coating**
through clean surface.



TATA STEELIUM neo

Tata Steelium was launched in 2003 as the first branded cold rolled steel in India. After completing a successful journey of 10 years, a new era began with the launch of Tata Steelium Neo in Sept' 2014. This is a brand extension of Tata Steelium offering superior quality, better tolerances and an enhanced product basket to fulfil unmet customer needs.



To ensure authenticity of purchase, the brand name is clearly stamped on the sheet: at intervals of approx. 800-870 mm.



DEDICATED TECHNOLOGY SUPPORT

The product range is backed by dedicated application engineering support. A team of application engineers collaborate closely with customers to add value to their manufacturing processes and generate value in an increasingly competitive market.



ALL-INDIA NETWORK

Tata Steelium is available through a widespread distributor network and authorised **ACE** service centres, geared to meet customised requirements. Each service centre is equipped with state-of-the-art facilities and processes for world class handling, storage and processing, to deliver on the highest parameters of quality.

TATA
Steelium
neo
CR Sheets and Coils

High Performance
Continuous Annealed CR Steel

TATA STEEL

Tata Steel Limited, Tata Centre, 43, Jawaharlal Nehru Road, Kolkata 700 071
Phone: 91 33 2288 7051 / 8251, Fax: 91 33 2288 5926, Toll Free Helpline: 1800 345 8282, 033 22248137

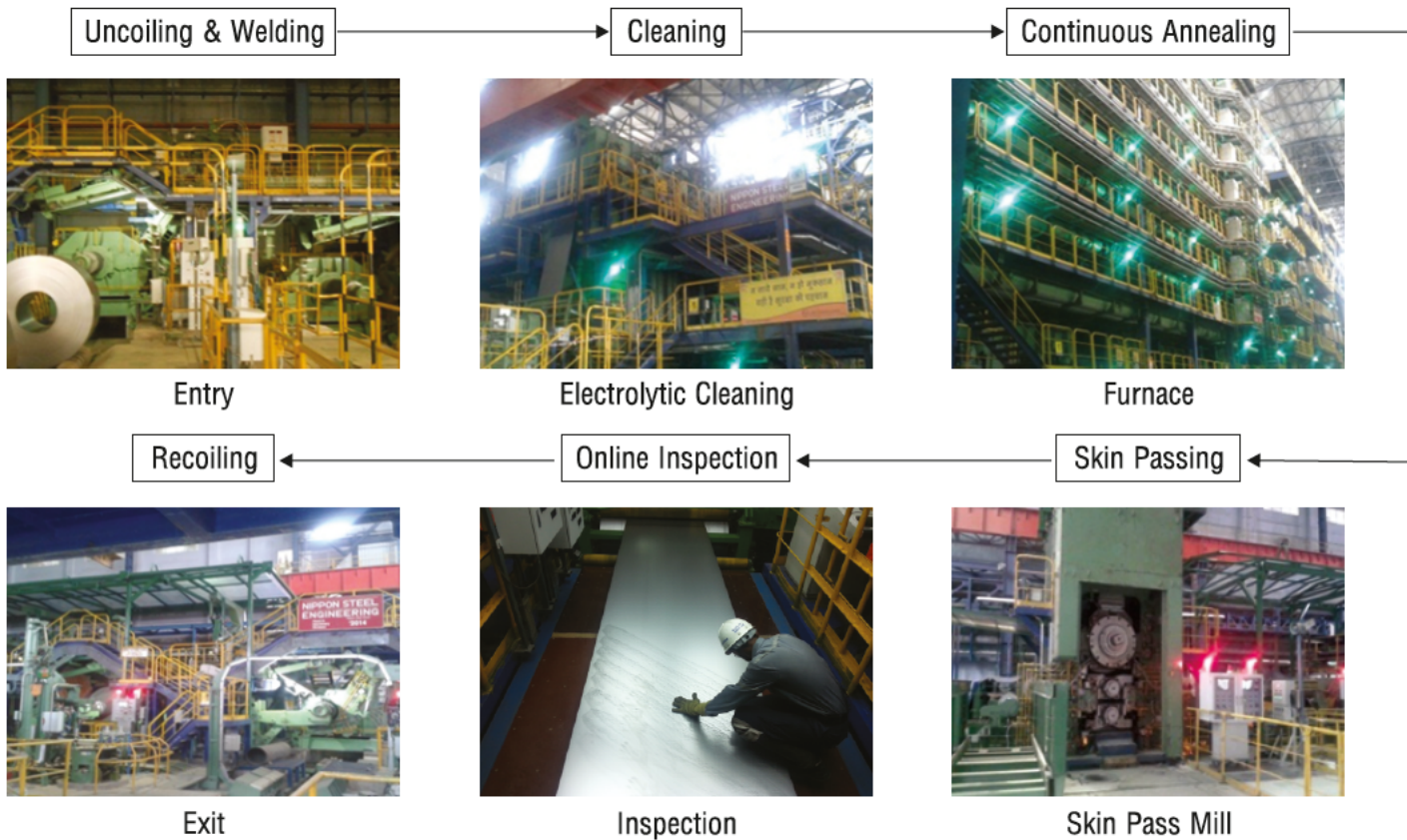


THE GLOBAL STANDARD. NOW IN INDIA.

Tata Steel in collaboration with Nippon Steel & Sumitomo Metal Corporation (NSSMC) has commissioned India's first Continuous Annealing & Processing Line at Jamshedpur, to bring into India sophisticated cold rolled steels to fulfill the unmet needs of customers. The plant has a capacity of 0.6 million tonnes per annum and is an amalgamation of the finest technologies from the world's leading manufacturers.

Drawing on a rich heritage of integrated steelmaking experience, it now offers customers an enhanced product basket of advanced cold rolled steels with a spectrum of unique advantages.

PROCESS FLOW



TECHNICAL SPECIFICATIONS

Chemical Composition

TDC		C	Si	Mn	P	S	Al	N (PPM)	Ti
TF15	Min	-	-	-	-	-	-	-	-
	Max	0.15	0.03	0.60	0.050	0.035	0.06	70	-
TG03	Min	-	-	-	-	-	0.02	-	-
	Max	0.15	0.04	0.60	0.050	0.035	0.08	70	-
TA09	Min	-	-	-	-	-	0.02	-	-
	Max	0.01	0.04	0.40	0.020	0.030	0.06	70	0.1
TA12	Min	-	-	-	-	-	0.02	-	-
	Max	0.01	0.04	0.25	0.020	0.020	0.06	70	0.1
TG04	Min	-	-	-	-	-	0.02	-	-
	Max	0.01	0.04	0.25	0.020	0.020	0.06	70	0.1

Mechanical Properties

TDC		RB (BHN)	YS (MPa)	UTS (MPa)	EL (%)	N value	R bar	Ra	BND
TF15	Min	53	-	-	-	-	-	0.6	OK
	Max	67	-	-	-	-	-	1.6	
TG03	Min	-	-	270	35	-	-	0.8	OK
	Max	55	270	410	-	-	-	1.6	
TA09	Min	-	110	275	42	0.22	1.65	0.8	OK
	Max	-	180	-	-	-	-	1.2	
TA12	Min	-	120	270	45	0.23	1.80	0.8	OK
	Max	-	160	340	-	-	-	1.2	
TG04	Min	-	110	270	40	-	-	0.8	OK
	Max	-	180	-	-	-	-	1.6	

Rust preventive oiling : Oil amount 1000-1500 mg / m2 / side

Thickness Tolerance

CRCA thickness (mm)	CRCA width (mm)	
	1000 - 1249	1250 - 1530
0.400 - 0.599	± 0.030 mm	± 0.040 mm
0.600 - 0.799	± 0.040 mm	± 0.040 mm
0.800 - 0.999	± 0.040 mm	± 0.040 mm
1.000 - 1.249	± 0.040 mm	± 0.040 mm
1.250 - 1.599	± 0.040 mm	± 0.050 mm
1.600 - 1.999	± 0.050 mm	± 0.060 mm
2.000 - 2.300	± 0.060 mm	± 0.070 mm

Width Tolerance

Trimming – order attribute

Edge Condition	Tolerance
Untrimmed	-0/+12
PLTCM Trimmed	-0/+6
CAPL Trimmed	-0/+3

Shape Standard

TDC	Edge wave height max. (mm)	Centre wave height max. (mm)
TF15	8	6
TG03	8	6
TA09	8	6
TA12	8	6
TG04	8	6

Logo Details

TDC	Tata Steelium neo Logo
TF15	Yes
TG03	Yes
TA09	No
TA12	No
TG04	Yes

* Gap between two logos approx. 800-870 mm

Sectional Range

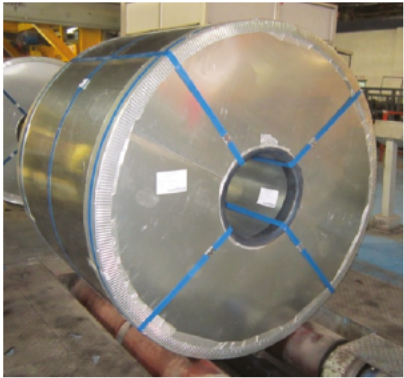
TDC	Thickness Range (mm)	Width Range (mm)
TF15	0.4 - 2.3	900 - 1530
TG03	0.4 - 2.3	900 - 1530
TA09	0.4 - 1.2	900 - 1530
TA12	0.4 - 1.2	900 - 1530
TG04	0.4 - 2.3	900 - 1530

* 1530 mm width order will be always logged as untrimmed

TDC & APPLICATIONS

TDC	Application
TF15	Furniture
TG03	Light draw (Panel & auto ancillary)
TA09	Auto ancillary
TA12	Auto ancillary
TG04	Deep draw (auto ancillary & GE)

PACKAGING DETAILS



Metal Packaging:

- Plastic ID Protector
- VCI HDPE Wrap
- Top Metallic GAL Sheet
- GAL Metal Side Disc
- GAL Metal OD Protector
- Filament Tape HDPE
- Metal Strapping
- 4 Labels

